



THEME:

Shared Spaces
Capital Development

FUNDING(ERDF+MATCH):

€8,962,540.60

MATCH FUNDERS:

The Department for
Communities NI &
Department of Rural and
Community Development
Ireland

LEAD PARTNER:

Donegal County Council

PROJECT PARTNERS:

Derry City and Strabane District
Council

PROJECT CONTACT:

fgallagher@donegalcoco.ie

Start Date: 01/01/2019

End Date: 31/03/2023



<http://www.donegalcoco.ie>



@donegalcouncil



@donegalcoco

SPECIAL EU PROGRAMMES BODY

Project Case Study: Riverine

The Riverine project will see the creation of a new shared space which will reach across Lifford and Strabane, creating thirty acres of new cross-border community park space and infrastructure.

Designed to help bring people together and encourage greater levels of positive cross-community contact, Riverine will encompass a number of uniquely designed elements.

These elements will include: a pavilion building (for various cultural and heritage events); outdoor wetland and park space (for recreation and environmental education activities); a family fun space (comprising of a toddler and junior adventure play area); cross-border pathways and greenways (to accommodate leisure and recreation activities); and a newly constructed pedestrian footbridge (that will symbolically connect the space across the River Foyle).

“Riverine is a joint project developed by Donegal County Council and Derry City & Strabane District Council. The project will take the form of a district park which will be located along the banks of the River Foyle on both sides, comprising of a number of key elements including outdoor events space, managed parkland, enhanced river access, an environmental area, an adventure play area and community building.

This shared space will be linked by a pedestrian bridge which spans across the river, representing a physical and symbolic link in connecting the communities of Strabane, Lifford and their rural hinterlands. In line with the overall PEACE IV Programme’s Shared Spaces objectives, the project will be supported by a dedicated community animation programme, designed to promote sustained and meaningful cross-border and cross-community contact & relations through a range of programmed activities targeting various groups.”

Karen Philips - Director of Environment & Regeneration- Derry City & Strabane District Council



Riverine Building Artists Impression



THEME:

Shared Spaces
Capital Development

FUNDING(ERDF+MATCH):

€8,962,540.60

MATCH FUNDERS:

The Department for
Communities NI &
Department of Rural and
Community Development
Ireland

LEAD PARTNER:

Donegal County Council

PROJECT PARTNERS:

Derry City and Strabane District
Council

PROJECT CONTACT:

fgallagher@donegalcoco.ie

Start Date: 01/01/2019

End Date: 31/03/2023



<http://www.donegalcoco.ie>



@donegalcouncil



@donegalcoco

SPECIAL EU PROGRAMMES BODY

Project Case Study: Riverine

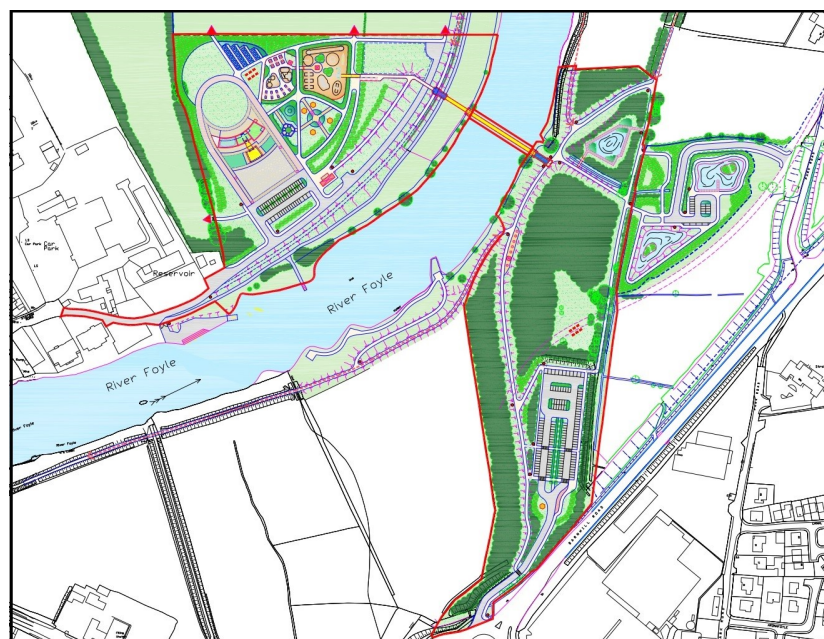
Following its construction, the project will deliver upon a number of different programming activities to maximise its usage for all communities on both sides of the border.

This activity will include: a community heritage engagement programme; a culture and peace activity trail; a creative arts programme and a shared space connections project.

The project represents a strong working cross-border partnership between Donegal County Council and Derry City and Strabane District Council. Both will be involved in the project's construction, delivery and maintenance.

“The Riverine Community Park will be of local and regional importance with the aim of helping to address the impact of the conflict in the Lifford and Strabane area and its hinterlands. This will be achieved by regenerating the border riverside area to create an iconic cross-border community park straddling the River Foyle as a shared space to bring communities together from both sides of the border, to re-connect and form new, long lasting relationships.”

**Liam Ward - Director of Community Development & Planning Services -
Donegal County Council**



Riverine Concept Design